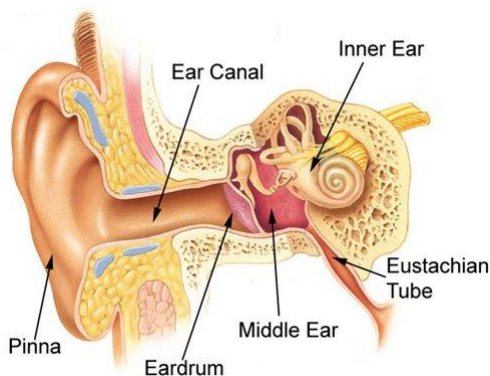


## Glue Ear

### What does this mean?

For sound to pass effectively through the outer, middle and inner ear to be processed in the brain the pathway must be clear and full of air.



When the Eustachian tube becomes blocked air cannot enter the middle ear. The middle ear begins to produce a liquid which becomes thicker and stickier.

It becomes harder for sound to pass through to the inner ear, making quieter sounds difficult to hear.

### Implications for learning

#### The CYP may

- Hear quite well in one-to-one situations but listening in a busy environment and with higher levels of background noise can be more challenging.
- Find learning incidentally much harder. Overhearing is important in vocabulary and grammar development.
- Be vulnerable to underachieving. They can miss up to 50% of what is said in the classroom.
- Have delayed language / a limited vocabulary
- Miss or mishear language
- Have greater difficulty concentrating and tire more quickly
- May find social interactions challenging, e.g. break times

### Ways to help

- Reduce background noise
- Get the CYPs attention before starting to speak
- Face the CYP when talking to them
- Do not stand in front of the window (your face will be in shadow)
- Use visual reinforcement
- Speak one at a time
- Make sure that the CYP is wearing their hearing aids (if they have been issued)

#### Other resources

[www.berkshiresensoryconsortium.co.uk](http://www.berkshiresensoryconsortium.co.uk)  
[www.ndcs.org.uk](http://www.ndcs.org.uk)

#### Related Sheets

Mild hearing loss  
Hearing aids