

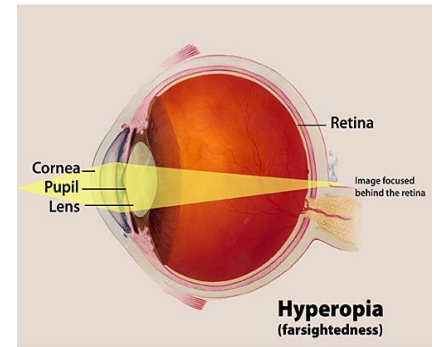
Hypermetropia (Long Sight)



What does this mean?

- The eyeball is too short and therefore the image of the object being viewed comes into focus behind the retina.
- Near objects may be blurred but distant objects are clear.
- A convex lens is used to correct long sight by bringing the focussed image forwards onto the retina. The severest cases cannot be completely corrected by the wearing of glasses and are usually associated with other visual conditions such as cataracts or a squint.

W



Implications for Learning

- Pupils will not be able to access distant information eg on white board.
- They may miss out on incidental learning such as information on display boards.
- They may take longer to copy information, as refocussing from near to distance is difficult
- Fast moving games/ ball games will be difficult
- They may find it difficult to find familiar people in a crowd.
- They may take longer to complete visually demanding tasks.

Ways to help

- Pupils with a mild vision impairment will need to sit within 2 metres of distant information.
- Always say the pupils name at the beginning when addressing them.
- Read what you are writing on the board.
- They may need some enlargement or increased spacing of written material.
- Written material needs to be of good quality and contrast in a clear font such as arial.
- In addition, pupils with a moderate vision impairment will need individual access to distant information.
- Brightly coloured balls/ equipment should be used in PE.

Other Resources

[W: berkshiresensoryconsortium.co.uk](http://www.berkshiresensoryconsortium.co.uk)

Related Sheets:

- Wearing glasses well